

# Intelligent Maritime Awareness Solutions for Shipping Operators

Powered by DanelecConnect

## What is Danelec-BOQA?

The primary purpose of Bridge Operations Quality Assurance (BOQA) is to systematically and automatically monitor operational quality and make it easy to find anomalies and detect unwanted behavior such as close encounters, route deviations, heavy weather on route and much more.

Danelec-BOQA is a way to pro-actively use the ship's **VDR data as per OCIMF recommendations**. The system is designed to be easy to use and mobile accessible and offers device- and location independent quality monitoring.

## Functionalities

- Fleet tracking
- Event monitoring
- Charter Party compliance checking
- Performance analysis

## Usability features

- Secure web-based access
- Device independent
- Super-fast timeseries analytics
- Auto-aggregation of timeseries data
- Automatic email-alerts
- Centralised User-management
- Fleet-wide or ship specific alert limits
- ECDIS-route to BVS-route conversion
- Support for most ECDIS route formats
- Global wind/wave forecasts

“Combining DanelecConnect data with our BOQA Quality Assurance technology makes it really easy for the ship owner to pro-actively use VDR data in daily operations. For us as a company it is also a true pleasure working with Danelec and their team across the globe and we always get a kind, fast and professional service from start to end.”

Capt. Henrik Ramm-Schmidt, Chief Business Officer, nauticAi



**Detect**  
Detect operational anomalies based on VDR data

**Comply**  
Ensure charter party speed compliance

**Manage**  
Manage risk with systematic quality monitoring

## Data sources

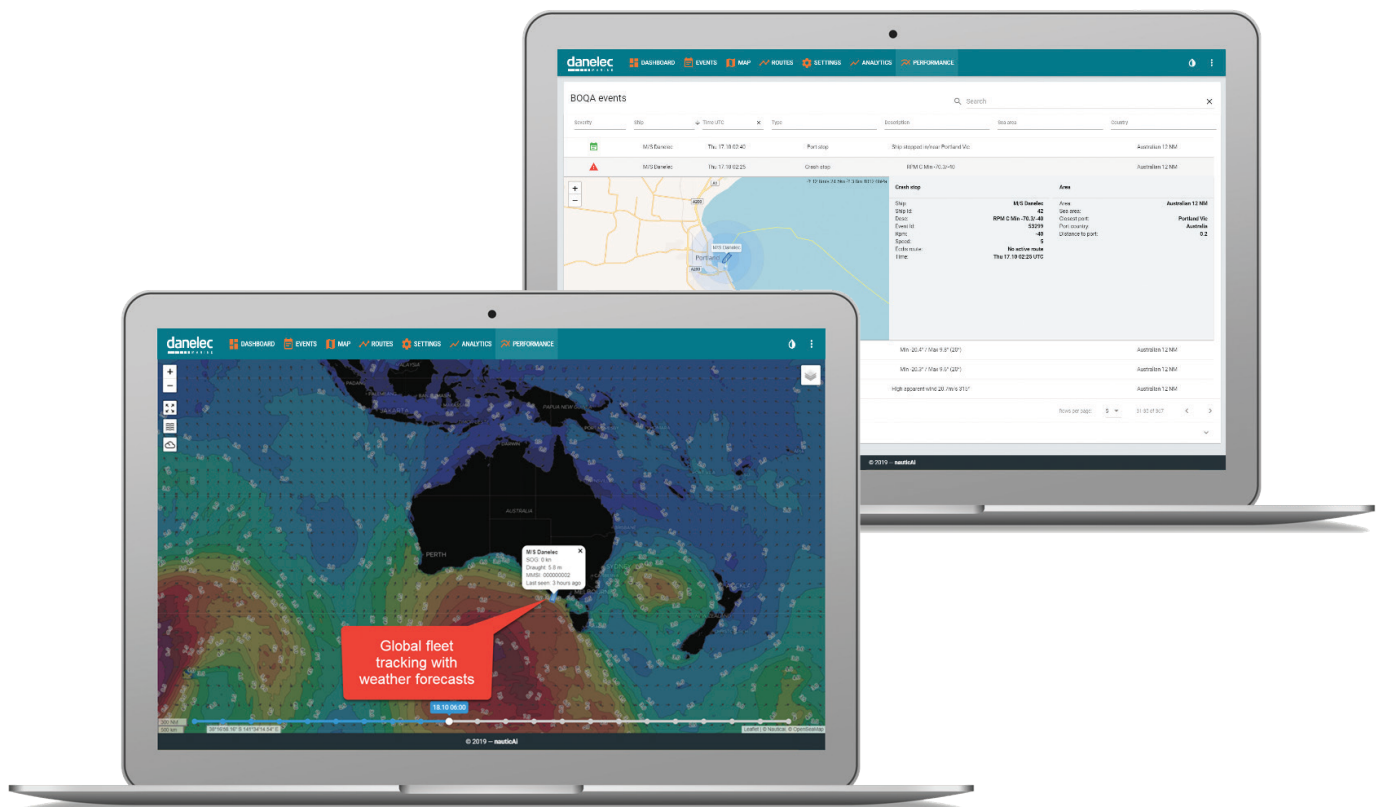
Danelec-BOQA is built for data and currently supports all available signal types in the DanelecConnect platform, such as:

- Position, heading, speed
- Water depth
- Shaft RPMs
- Fuel flow
- Generator power
- Rudder angles
- Wind speed
- Door- and ramp-signals
- System alarms

## Event triggers

Event monitoring is the key in Danelec-BOQA, more than 30 different events can already be tracked, including:

- Cross-track error and safety corridor breach
- Heading deviations and Speeding
- Stops at sea and in port
- Area entry and exits (PSSA/ECA/Piracy)
- High wind in port and at sea
- Heavy weather on route
- UKC Under Keel Clearance
- Excessive rudder
- RPM command and Crash stop



**Danelec's ship-2-shore data solutions** are powered by the connectivity Hardware modules which pick up analog, digital or serial sensor data throughout the ship for onboard data collection, and connect it to the vessel's existing network and communication infrastructure for data transfer to shore.

The data for the service is collected from various systems, such as onboard flow meters, torque/thrust meters, automation systems, and navigation systems or meteorological services.

**nauticAi** is a Finnish maritime IT-startup specialising in affordable operational awareness solutions to help shipping operators make more money faster, while increasing safety. nauticAi technology is used for automated quality assurance and risk management (BOQA), real-time situational awareness and chartering/operations.

For more information, go to [www.nauticai.com](http://www.nauticai.com) or email [sales@nauticai.com](mailto:sales@nauticai.com).